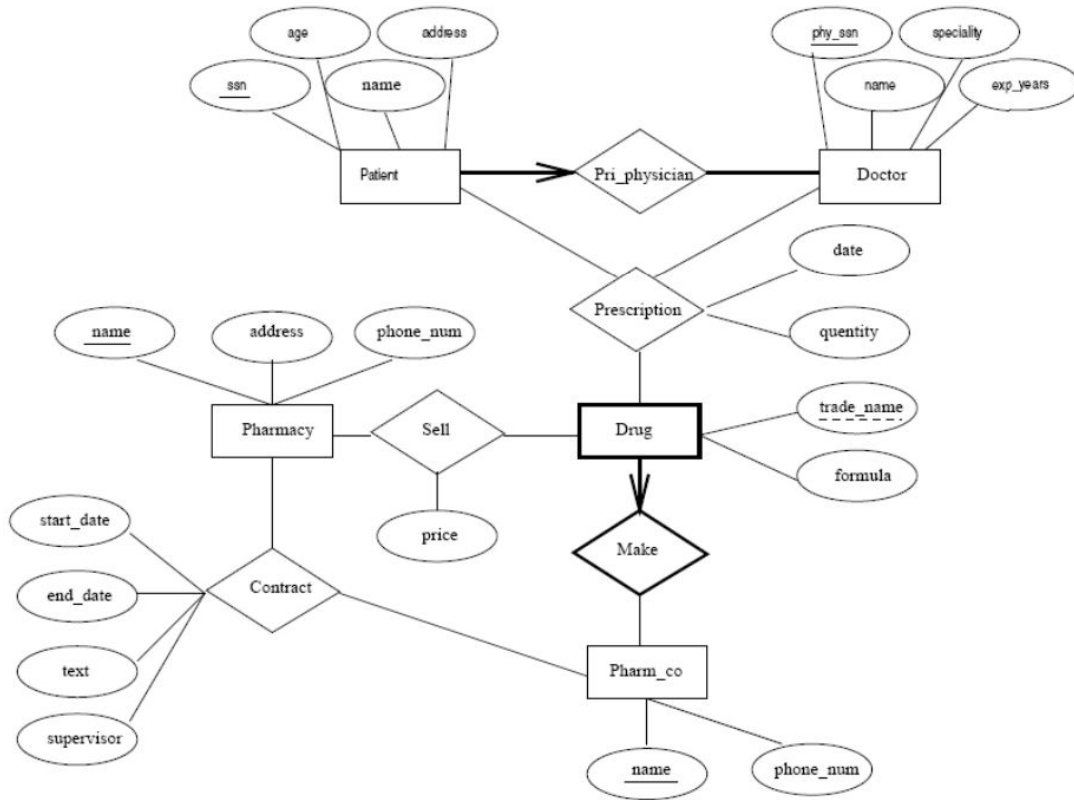


# CS460 Lab 3

Relational Schema

# What is a Relational Schema

- A set of tables that are related to one another
- Blueprint of database design and structure



How do we transform this into a schema?

Transformation steps

# 1. Convert Entities

- Identify all entity types and create tables for each entity.
- Single-valued attributes form a column in the table
- Key attribute becomes Primary key
- Declare foreign key and its reference, if applicable

## 2. Weak Entities and Relationships

- Weak entities also get their own table
- Foreign key column for primary key of strong entity
- Foreign key + weak entity key = primary key of weak entity

Many to many relationships will form their own table