

ER Model

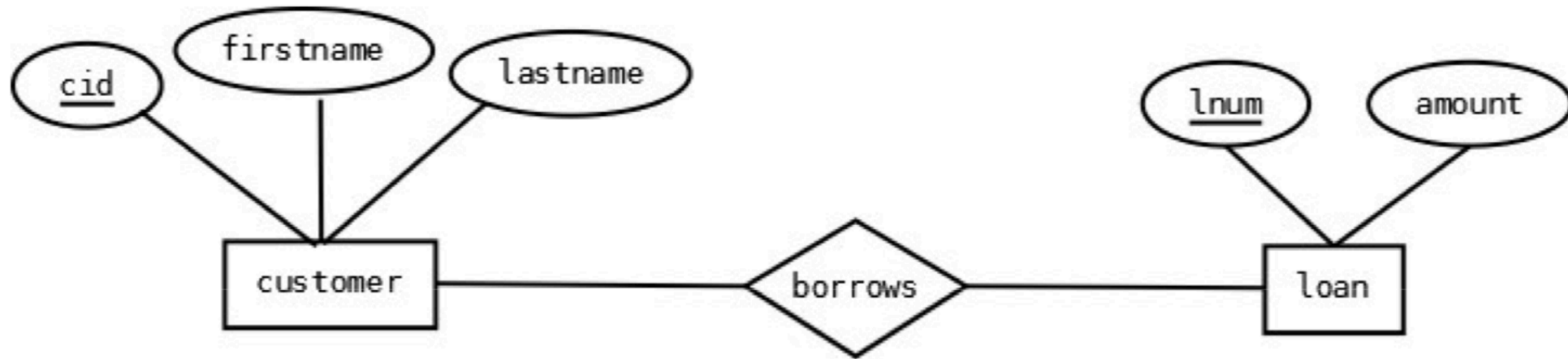
CS460: Introduction to Database Systems

TA: Dimitris Staratzis

Email: dstara@bu.edu

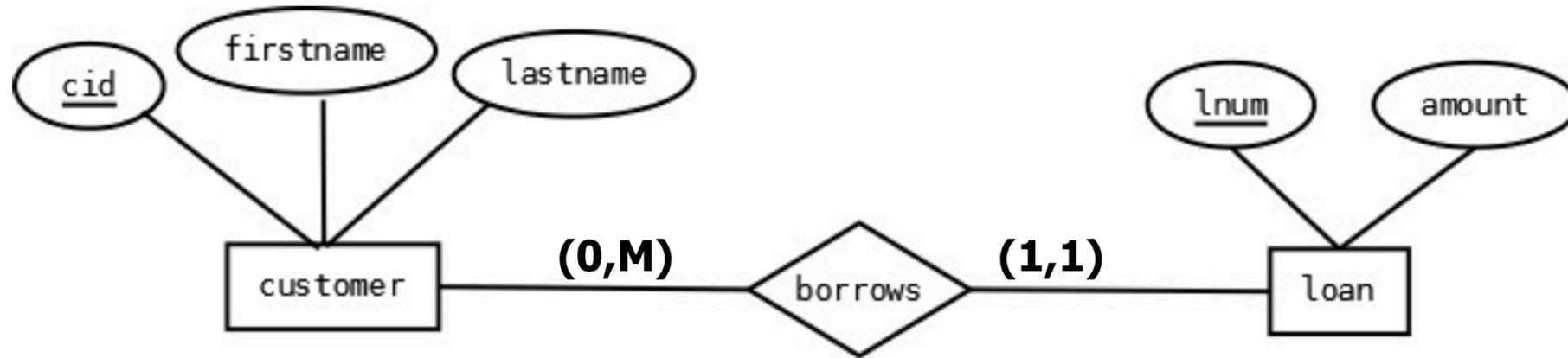
Office Hours: Monday 13:30 – 14:30, Thursday 16:30 – 17:30

ER Diagrams



- **Entity(Rectangle)**: An Entity is a thing or object in real world that is distinguishable from surrounding environment. They have a primary key, distinguishing each occurrence of the entity.
- **Relationships(Diamond)**: Relationships are associations between or among entities.
- **Attributes(Oval)**: Attributes are characteristics of an entity, a many-to-many relationship, or a one-to-one relationship. Underlined attributes indicate primary keys.

Ordinality and Cardinality



- **Ordinality** is the minimum number of times an instance in one entity can be associated with an instance in the related entity.
- **Cardinality**, on the other hand, refers to the maximum number of times an instance in one entity can relate to instances of another entity.

Exercise

go to <https://www.draw.io>